

975000

D

C

B

A

4

3

2

1

UNLESS OTHERWISE SPECIFIED
DIMENSIONS ARE IN INCHES

TOLERANCES

DECIMAL: ANGULAR:
 .XX+/- .015 +/- 1/2DEG.
 .XXX+/- .005

FRACTIONAL:
 +/- 1/64

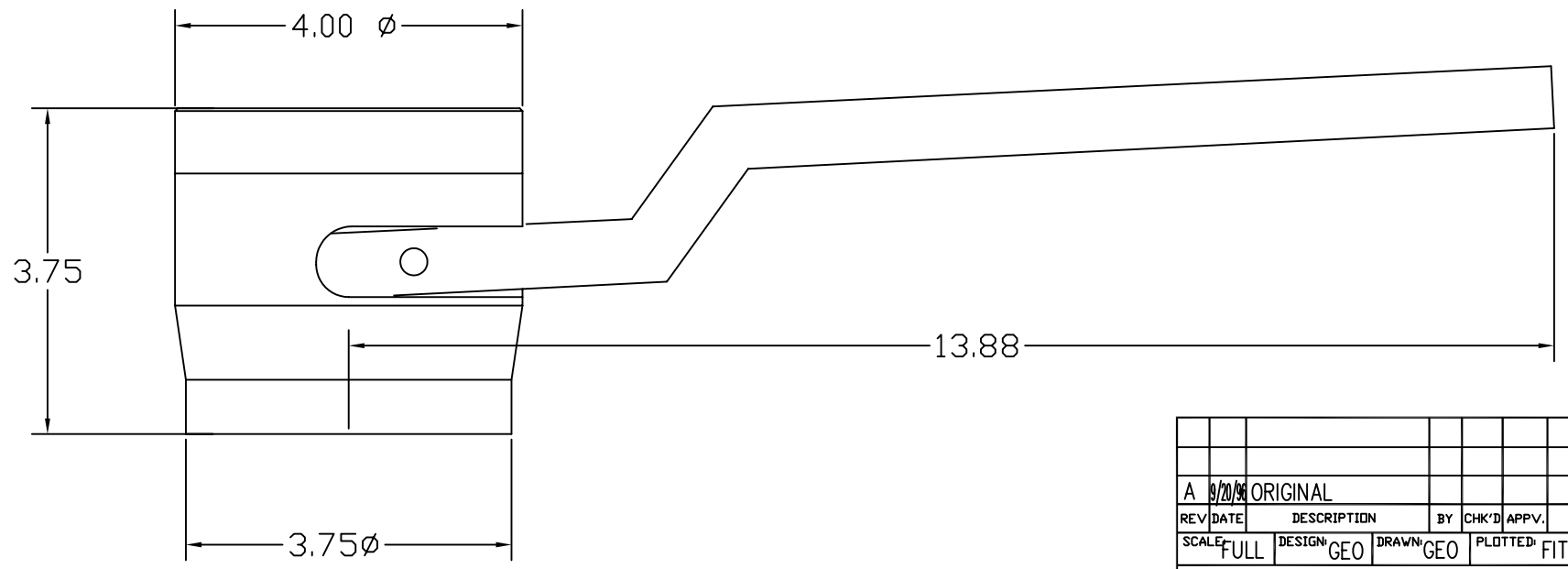
D

C

B

A

PROPRIETARY NOTICE
 This Technical Document contains information proprietary to
 Engineering Manufacturing Services Company. Its contents may
 not be copied, distributed, disclosed to other organizations
 or used for any other purpose than intended without the express
 written permission of Engineering Manufacturing Services Company.



| | | | | | | | | | |
|-------|---------|-------------|-----|-------|-------|---------|-----|--|--|
| | | | | | | | | | |
| | | | | | | | | | |
| A | 9/20/94 | ORIGINAL | | | | | | | |
| REV | DATE | DESCRIPTION | BY | CHK'D | APPV. | | | | |
| SCALE | FULL | DESIGN | GEO | DRAWN | GEO | PLOTTED | FIT | | |

EMS Engineering Manufacturing Services Co.
 5634 CANNON DR. MONROE, NC 28110
 (704) 821-7325

GENERAL DIMENSIONS
 FOR
 SWITCHLINK I

| | | |
|---------|-------------|------|
| JOB NO. | DRAWING NO. | REV. |
| 975000 | 975000 | A |

4

3

2

1